

The **SUREURO** Sustainable Checklists will help to implement and consider various sustainable and conventional issues at every step of the refurbishment process (from diagnosis phase to operation phase).

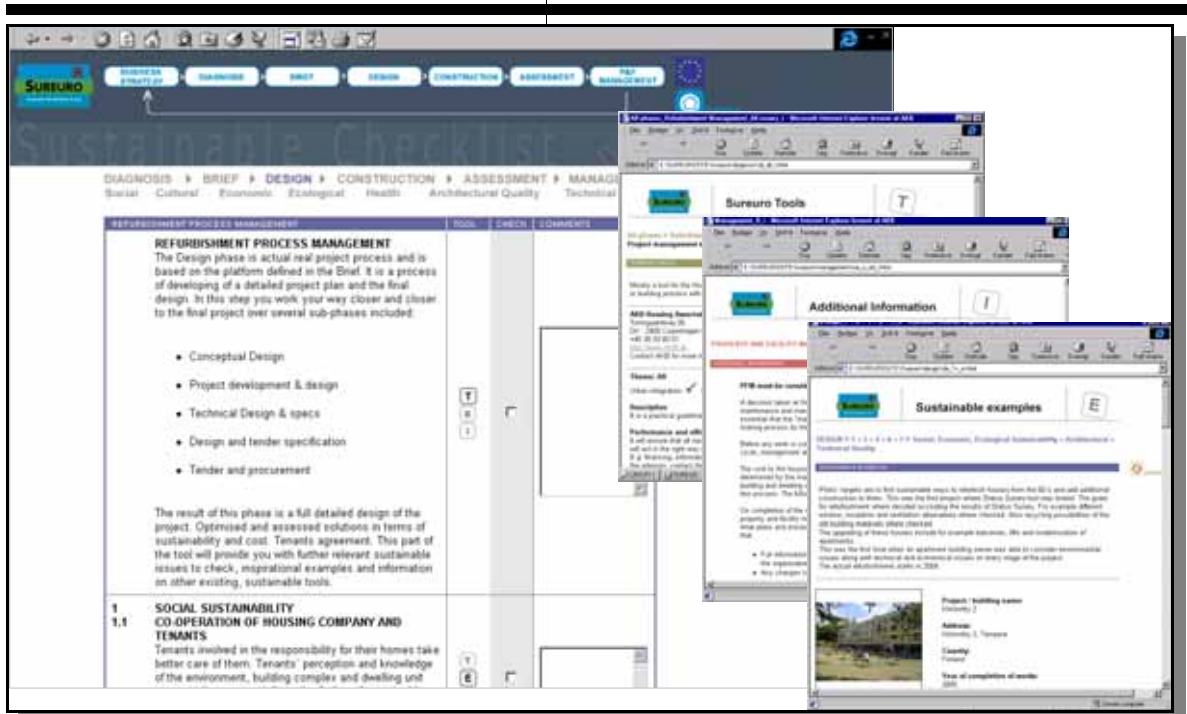
SUREURO will provide the housing companies with a relevant and integrated tool - the Sustainable Checklists.

The tool is a complete entity, which gives the user a set of unique checklists, which are specially designed for each of the phases of a refurbishment process, and offers the user direct access to various side-tools.

These are relevant sustainable examples, supporting descriptions about other existing European tools and access to additional and clarifying information supporting the Checklists.

The tool is adjusted to a realistic and practical every day situation in the housing company and it is created for all involved actors in a refurbishment project. The ambition has been to create a useful product on a practical user level and yet with a high level of scientific content and with extract of the developers high expertise on the different thematic levels.

One of the most important goals for this tool is to ensure that it actually motivates and opens up the eyes on our main target groups, the housing organisations in Europe.



The key to change the understanding, working methods and decision making is to make it easier to implement sustainable considerations with a more practical attitude directly in the future projects.

By collecting the knowledge and know-how and providing technical guidelines in various fields, the check-lists fosters awareness about sustainable issues, help to keep them in mind during the process, and encourage best practice to implement them in daily refurbishment operations.

The tool is planned to help, step by step, along the refurbishment process; from the preliminary considerations through comple-

tion of the physical refurbishment to the operation of the newly refurbished building, flat or neighbourhood.

The originality comes from the set of sustainable and conventional criteria used all along the methodology, representing different kinds of concerns:

Sustainable issues:

- Social Sustainability
- Cultural Sustainability
- Economical Sustainability
- Ecological Sustainability
- Health

Conventional issues:

- Architectural and technical quality