

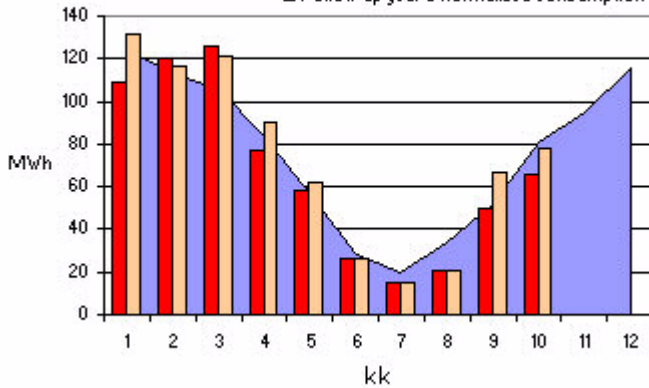
(9650) KITINIITYNKATU 2
 KITINIITYNKATU 2 33850 TAMPERE

DISTRICT HEAT	RESIDENTIAL BUILDING	
CONSTRUCTION VOLUME: 15310 m ³	YEAR OF CONSTRUCTION: 1971	OCCUPANTS: 124

1.1 Monthly consumption of heat energy MWh

Period		Change		Change
1-10 / 2001	667,7	5,6 %	727,4	4 %
1-10 / 2000	632,1		699,3	

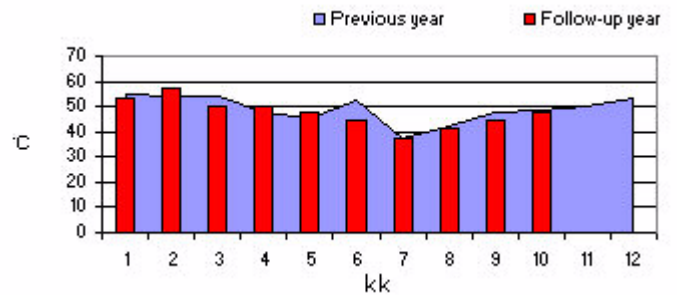
■ Previous year's normalized consumption
■ Follow-up year's real consumption
■ Follow-up year's normalized consumption



1.2 Yearly consumption of heat energy

	MWh	kWh/Rm ³
Follow-up year's estimated consumption	883,8	57,7
Previous year's consumption	803,1	52,4
Follow-up year's estimated normalized consumption and thermal index	943,5	61,6
Previous year's normalized consumption and thermal index	909,5	59,4
Average normalized consumption of corresponding properties of the locality	843,6	55,1
Variation ranges of the thermal index monitored in corresponding properties	46,8 - 63,5	kWh/Rm ³

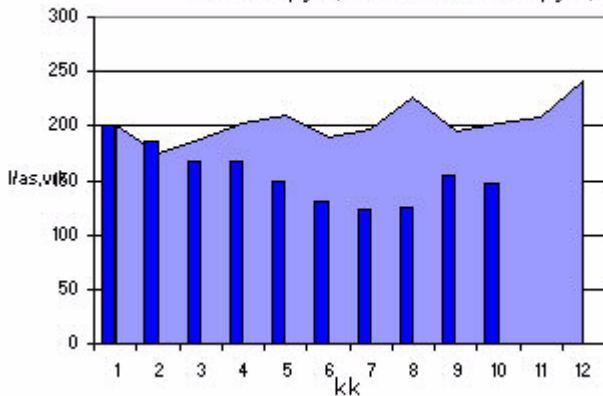
1.3 Average cooling of district heating water



2.1 Monthly water consumptions

Period	m ³	Change
1-10 / 2001	5836,7	-11 %
1-10 / 2000	6559,4	

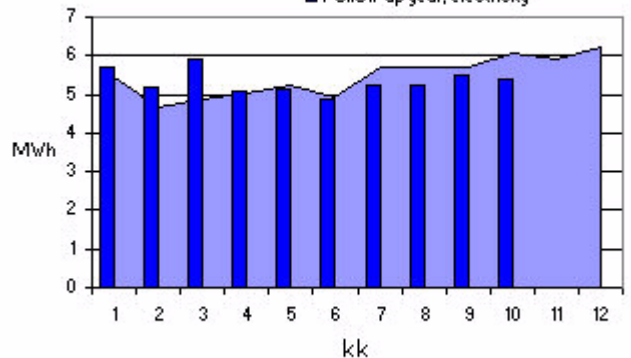
■ Previous year, cold water
■ Previous year, warm water
■ Follow-up year, cold water
■ Follow-up year, warm water



3.1 Monthly electricity consumption MWh

Period	MWh	Change
1-10 / 2001	53,3	-0,1 %
1-10 / 2000	53,4	

■ Previous year, electricity
■ Previous year, electricity with night tariff
■ Follow-up year, electricity



2.2 Yearly consumption of water

	m ³	l/as,vrk	l/Rm ³
Follow-up year's estimated consumption	7234,2	159,8	473
Previous year's consumption	8038,5	203,9	525
Average consumption of corresponding properties	7739	171	
Variation ranges of consumptions of corresponding properties	136 - 206	l/as,vrk	

3.2 Yearly consumption of electric energy

	MWh	kWh/Rm ³
Follow-up year's estimated consumption	65,4	4,2
Previous year's consumption	65,6	4,2
Average consumption of corresponding properties	57,6	3,76
Variation ranges of consumptions of corresponding properties	2,04 - 5,48	kWh/Rm ³