

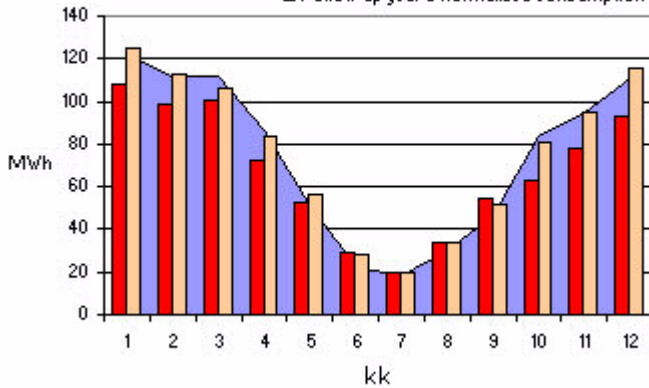
(9650) KITINIITYNKATU 2
 KITINIITYNKATU 2 33850 TAMPERE

DISTRICT HEAT	RESIDENTIAL BUILDING	
CONSTRUCTION VOLUME: 15310 m ³	YEAR OF CONSTRUCTION: 1971	OCCUPANTS: 108

1.1 Monthly consumption of heat energy MWh

Period		Change		Change
1-12 / 2000	803,1	-5,2 %	909,5	2,2 %
1-12 / 1999	847,5		889,9	

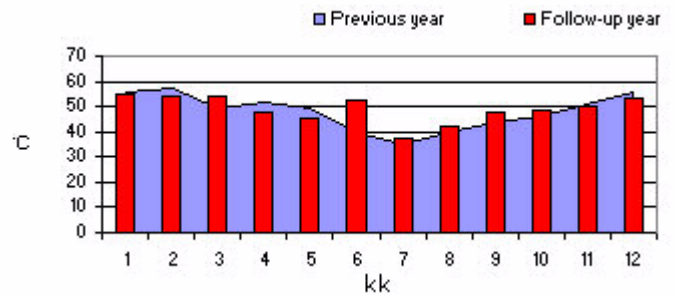
■ Previous year's normalized consumption
■ Follow-up year's real consumption
■ Follow-up year's normalized consumption



1.2 Yearly consumption of heat energy

	MWh	kWh/Rm ³
Follow-up year's estimated consumption	803,1	52,4
Previous year's consumption	847,5	55,3
Follow-up year's estimated normalized consumption and thermal index	909,5	59,4
Previous year's normalized consumption and thermal index	889,9	58,1
Average normalized consumption of corresponding properties of the locality	843,6	55,1
Variation ranges of the thermal index monitored in corresponding properties	46,8 - 63,5	kWh/Rm ³

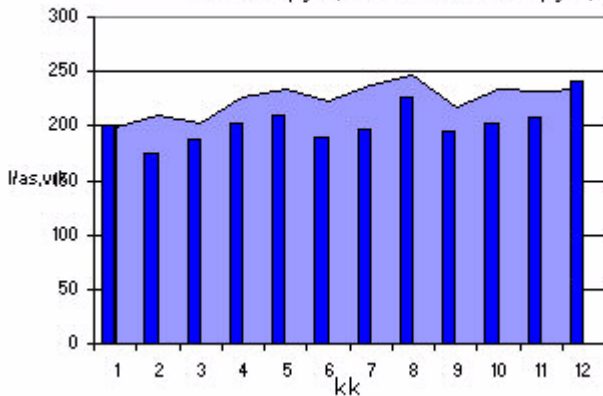
1.3 Average cooling of district heating water



2.1 Monthly water consumptions

Period	m ³	Change
1-12 / 2000	8038,5	-5,6 %
1-12 / 1999	8515,8	

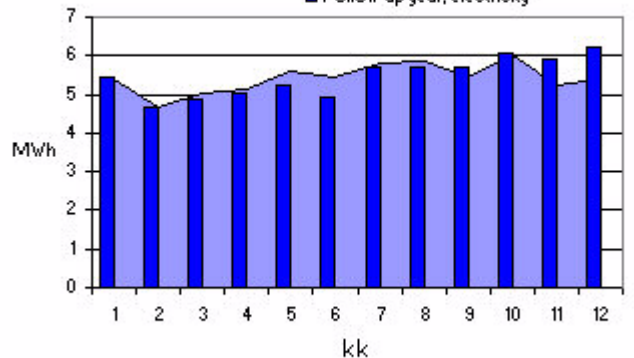
■ Previous year, cold water
■ Previous year, warm water
■ Follow-up year, cold water
■ Follow-up year, warm water



3.1 Monthly electricity consumption MWh

Period	MWh	Change
1-12 / 2000	65,5	0,6 %
1-12 / 1999	65,1	

■ Previous year, electricity
■ Previous year, electricity with night tariff
■ Follow-up year, electricity



2.2 Yearly consumption of water

	m ³	l/as,vrk	l/Rm ³
Follow-up year's estimated consumption	8038,5	203,9	525
Previous year's consumption	8515,8	224,3	556
Average consumption of corresponding properties	6741	171	
Variation ranges of consumptions of corresponding properties	136 - 206	l/as,vrk	

3.2 Yearly consumption of electric energy

	MWh	kWh/Rm ³
Follow-up year's estimated consumption	65,6	4,2
Previous year's consumption	65,1	4,2
Average consumption of corresponding properties	57,6	3,76
Variation ranges of consumptions of corresponding properties	2,04 - 5,48	kWh/Rm ³